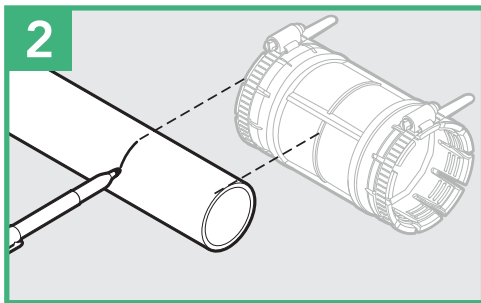
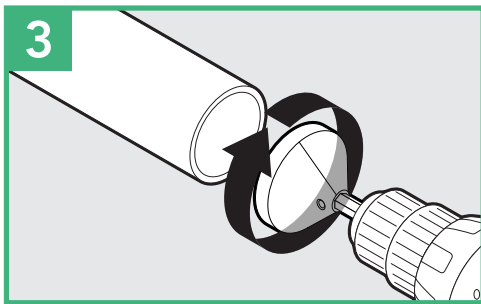


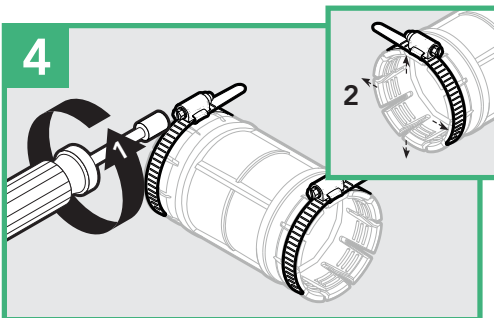
Ensure your conduit has a clean, perpendicular cut.



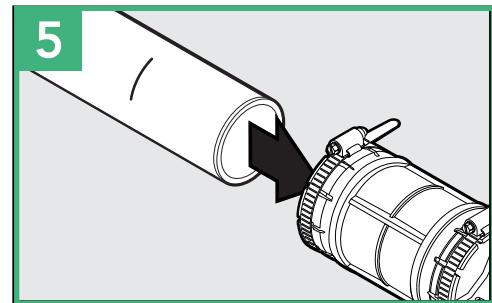
Overlap ends of conduit. Place duct at center of coupler and mark end.



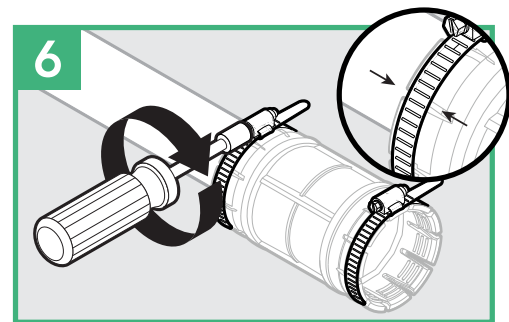
Chamfer the leading edge of the conduit for smoother insertion.



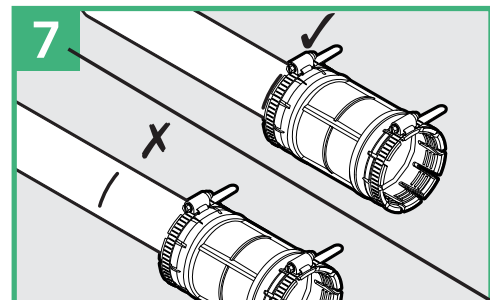
Loosen the band clamps to allow spreading of the split segments on the end of the coupler during insertion.



Push conduit into the coupler past the grip ring and O-ring until it hits the center stop and the mark is aligned with the end of the coupler. This ensures the O-ring is seated properly.



Verify the band clamp is positioned in the groove and fully tighten it down.



Repeat process with second piece of duct.



An Orbia Connectivity Solutions business.

WWW.DURALINE.COM

CUSTOMER SERVICE: 1 (800) 847-7661