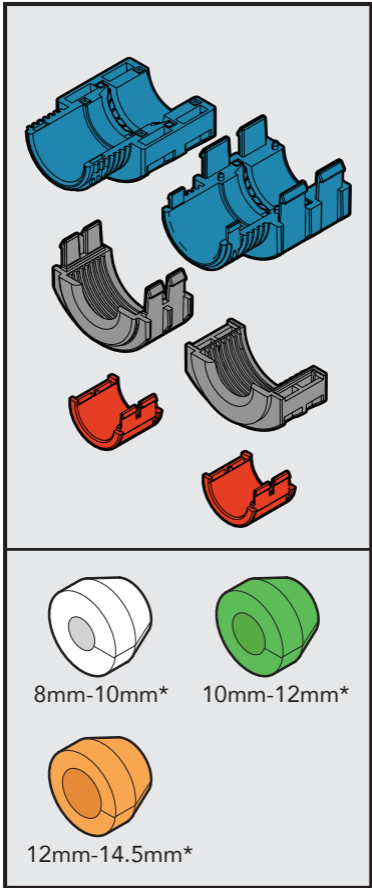


22mm

Divisible Duct Seal

Installation Instructions

Package Contents



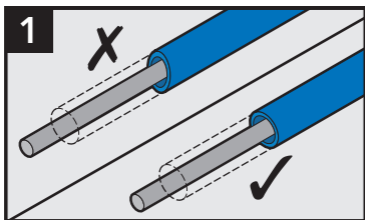
**Cable Outer Dimensions*



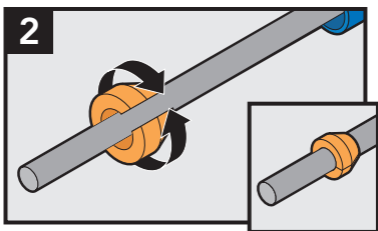
dura·line

An Orbia Connectivity Solutions business.

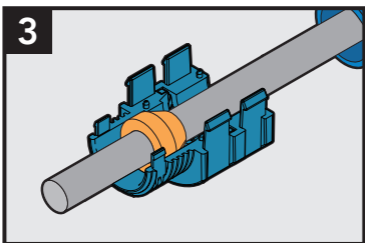
Installation Instructions



Cut duct straight.



Select the appropriately sized seal to install on cable.



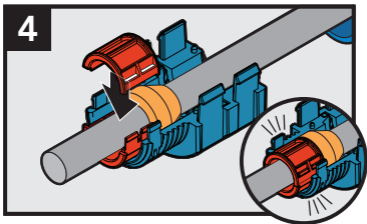
Place seal around the cable and position seal inside one of the blue cover pieces.



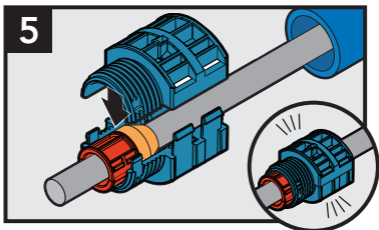
dura·line

An Orbia Connectivity Solutions business.

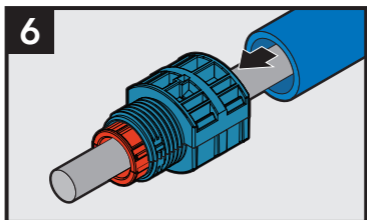
Installation Instructions



Connect both red pieces around the cable, against the flat side of the seal. The red pieces will extend past the bottom of the blue cover piece.



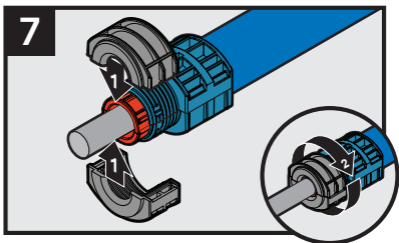
Place the other blue cover piece on top of the assembly and click it into place.



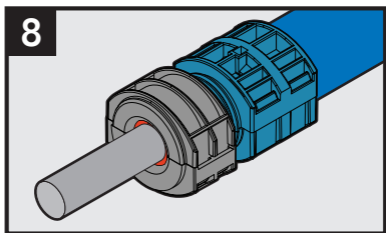
dura·line

An Orbia Connectivity Solutions business.

Installation Instructions



Close both black pieces around the cable and tighten the nut only until touching the red pieces. **DO NOT** over tighten.



Tighten the nut manually to close the gap around the cable. **DO NOT** use tools.



dura·line

An Orbia Connectivity Solutions business.