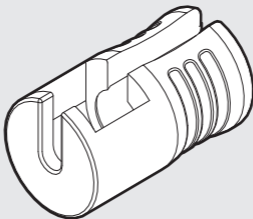


5mm, 7mm, 8mm

Divisible Duct Seal

Installation Instructions

Package Contents



0.9mm-1.2mm*



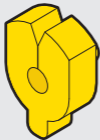
1.3mm-1.5mm*



1.6mm-1.8mm*



1.9mm-2.2mm*



2.25mm-2.5mm*

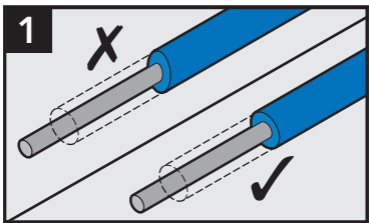
**Cable Outer Dimensions*



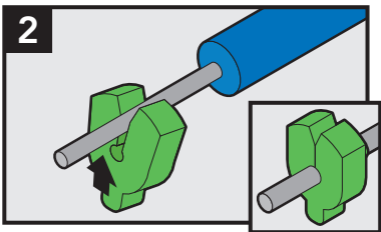
dura·line

An Orbia Connectivity Solutions business.

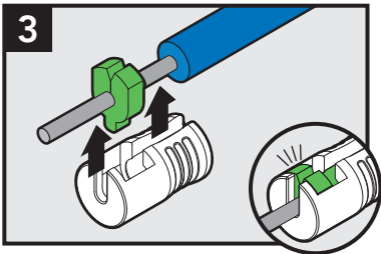
Installation Instructions



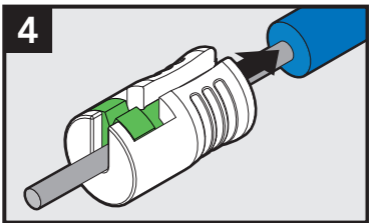
Cut duct straight.



Select required seal and install on cable.



Install cover until it clicks.



Push connector down onto the duct.